

1

Set sliding door fittings

2

Guide rail

3

Door stoppers

5

Wall fixtures

6

Special tool

7

Bottom guide

8

glass stopper

4

Trolley complete

5/16"-18UNC

(without screws and dowels, at construction site)
* not included in scope of delivery

SW 5

Track rail length	Set / Each					
1	2	3	4	5	6	7
118 1/8"	2	4	4	8	1	2
144"	2	4	4	8	1	2
192"	2	4	4	10	1	2

Beyerle US L.L.C., ABP-Beyerle, it's subsidiaries and agents are not responsible or liable for damage or injury to any persons or property due to improper installation of it's products.
All liabilities reside solely with the installer.

ABPbeyerle

Beyerle US L.L.C.
5126 South Royal Atlanta Drive , Tucker, GA 30084, USA
Phone (770) 349 - 6324 , Fax (770) 934 - 3384 , mail: info@beyerle-us.com, www.beyerle-us.com

!

Comply with all general safety regulations when installing the sliding door fittings!

Installation to be completed by qualified licensed contractor.

Be sure to tighten all screw connections one week after starting to use the sliding door fittings!

Neveruse scouring agents to clean the sliding door fittings; rather use commercially available stainless-steel cleaners!

!

Attention

+

Screw on

+

Screw on

↺↻

Loosen/Tighten

↓

Install

90°

At right angle

+

Drill

+

Dowels

✳

Adjust Set

+

Level

+

Perpendicular

+

Measure Mark

+

Visual inspection

+

Special-tool

+

2 people required

+

Measure

?

Clarify questions

+

See Instructions

+

Secure

65 30 00.0226_Pandora_Mont_US

Installation instructions

Sliding door fittings Pandora

for 2 leaf glass doors (5/16" - 1/2" inch)

A

5 1/8" B B B 5 1/16" 5-1/16" B B B 5-1/8"

C

!

+

?

You must check the position of the wall fixtures and the door stopper before installation!

E

1"

D

1"

F

glass doors 5/16" - 1/2" tempered safety glass max. 320 lbs

glass doors 5/16" - 1/2" tempered safety glass max. 320 lbs

Bottomguide

Bottomguide

G

13/16"

1"

1/2"

5/16"-1/2"

!

+

?

You must check the position of the wall fixtures and the door stopper before installation!

Warning!

Proper header or mounting be am must be installed for the full length of the sliding door rail to provide adequate support because of the weight of the sliding door system

Complete-set's

A Inch	B Inch	C Each	D Inch	E max. Inch	F Inch	G Inch	H max. Inch (H = E - F + 1")
118 1/8"	16 1/4"	8	55 1/8" - 59"	98 7/16"	1/4" - 3/8"	2 3/8"	99 1/8"
144"	20 9/16"	8	59" - 70 7/8"	98 7/16"	1/4" - 3/8"	2 3/8"	99 1/8"
192"	21 7/16"	10	78 3/4" - 94 1/2"	98 7/16"	1/4" - 3/8"	2 3/8"	99 1/8"

Right to make technical changes reserved - Dimensions in inch - Version 08.2018
© by ABP-Beyerle GmbH

ABPbeyerle



Fig. 1

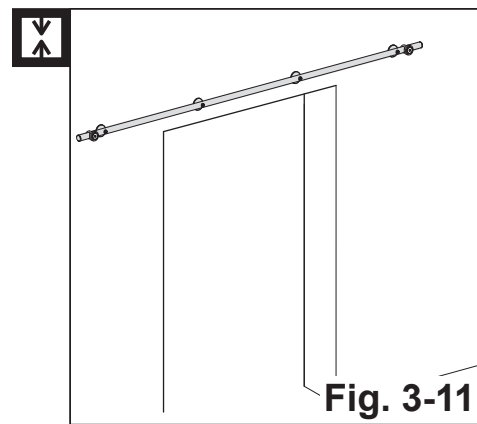


Fig. 2

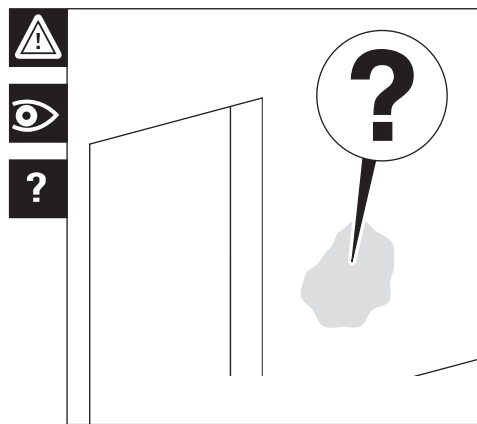


Fig. 3

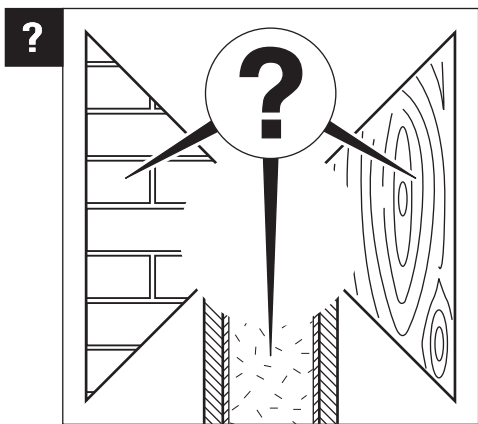


Fig. 4

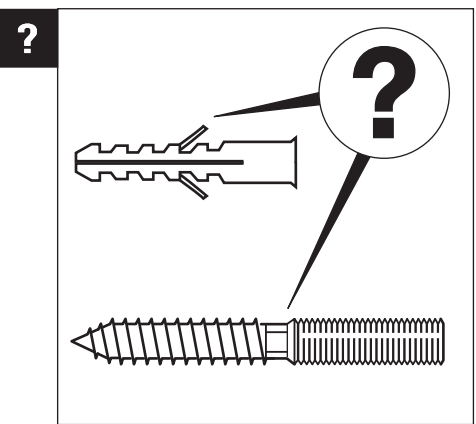


Fig. 5

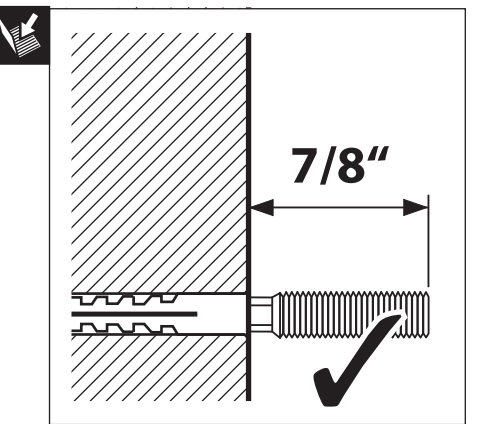


Fig. 6

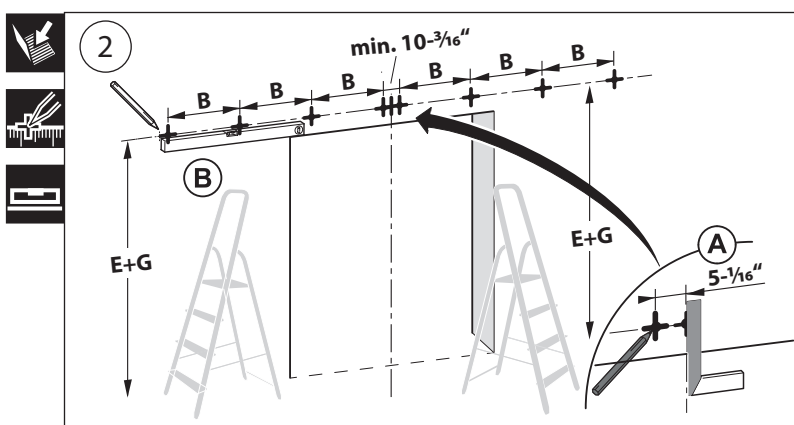


Fig. 7

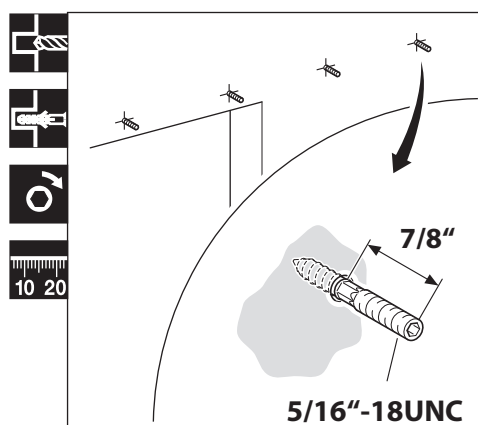


Fig. 8

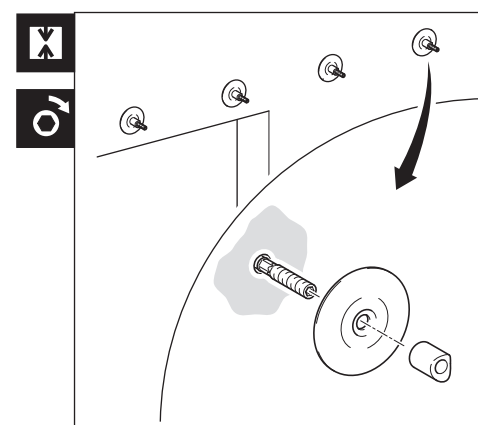


Fig. 9

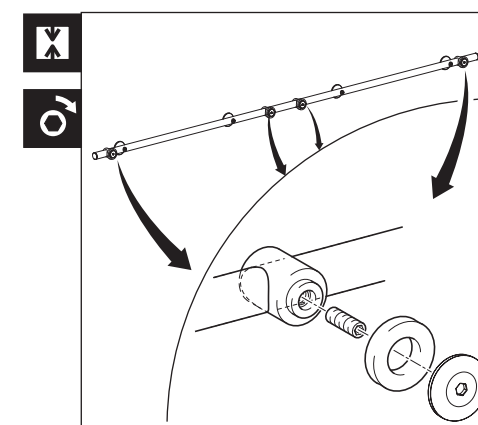


Fig. 10

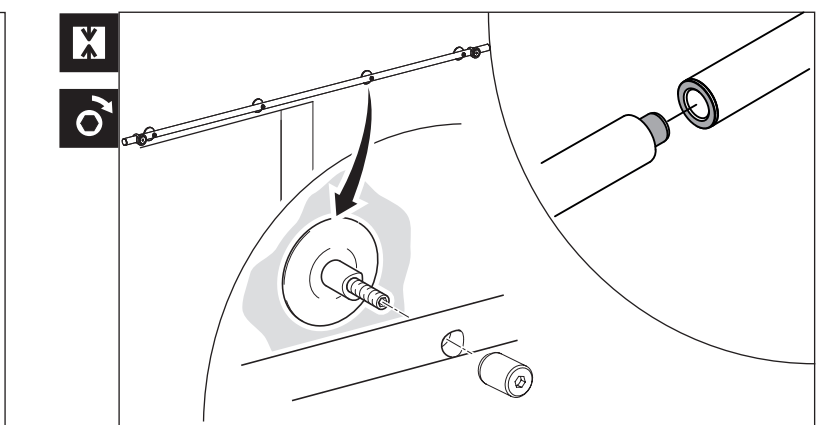


Fig. 11

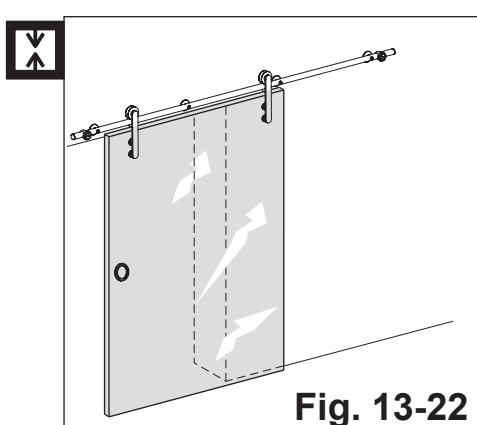


Fig. 12

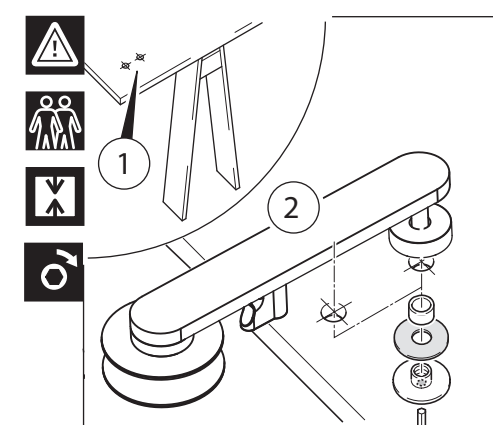


Fig. 13

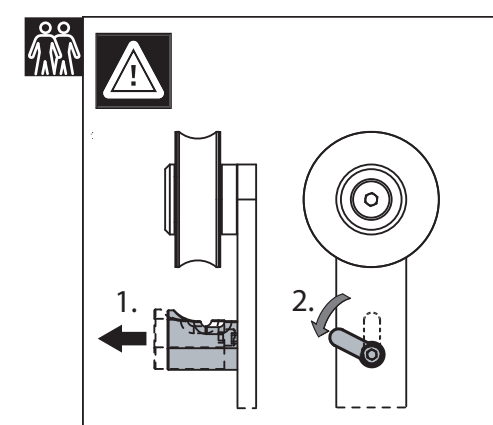


Fig. 14

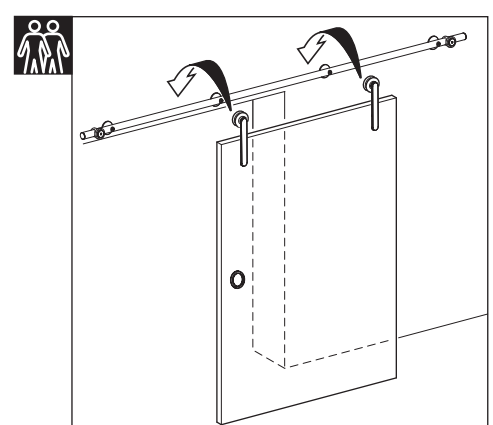


Fig. 15

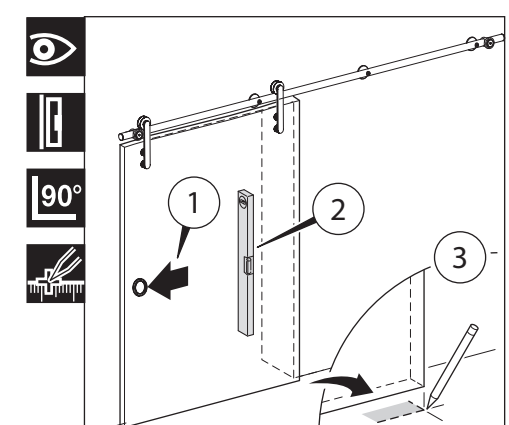


Fig. 16

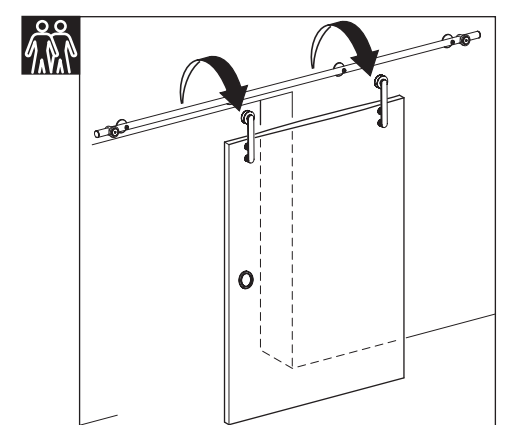


Fig. 17

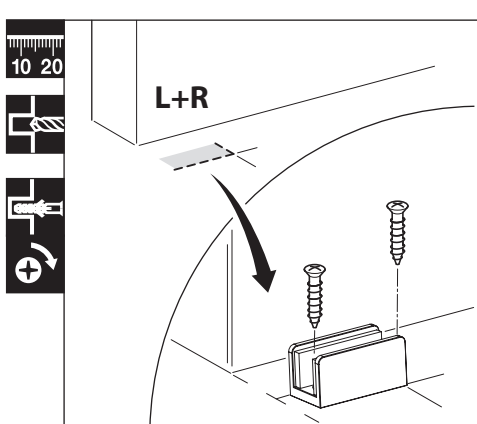


Fig. 18

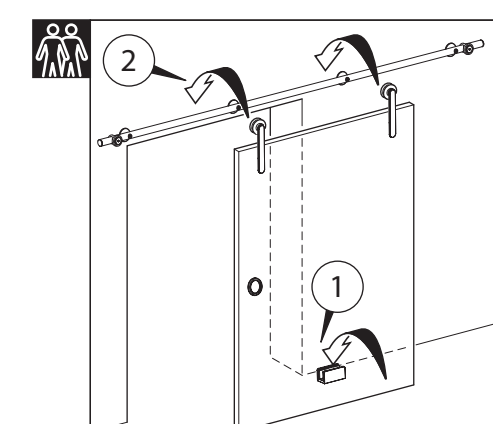


Fig. 19

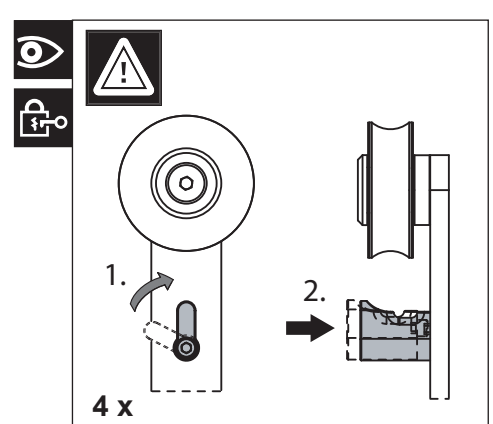


Fig. 20

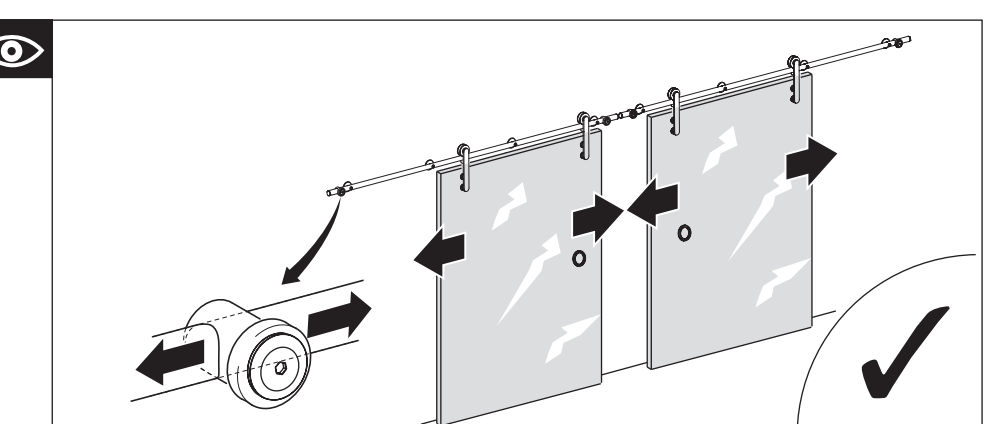


Fig. 21

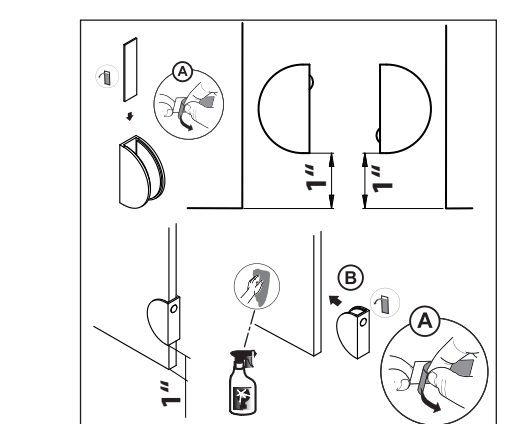


Fig. 22